



COMMUNITY REUSE ORGANIZATION

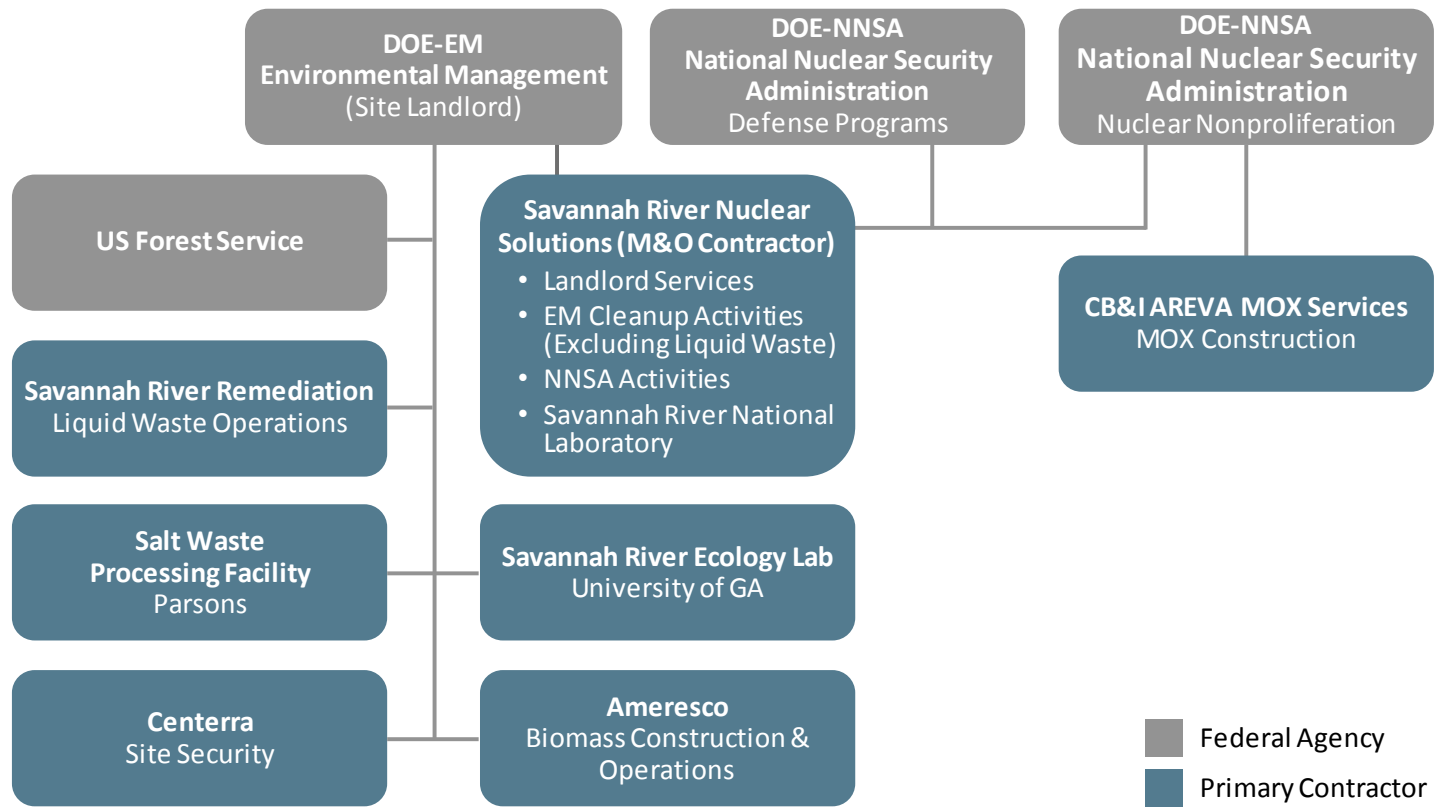
two states, one future

AUGUST 2017

THE SAVANNAH RIVER SITE

ECONOMIC IMPACT & WORKFORCE TRANSITION

The Savannah River Site (SRS) is a US Department of Energy industrial complex that is responsible for environmental stewardship, environmental clean-up, waste management, and disposition of nuclear materials. SRS processes and stores nuclear materials in support of national defense and U.S. nonproliferation efforts. The Site also develops and deploys technologies to improve the environmental management of nuclear materials left from the Cold War. SRS is situated on 310 square miles in Aiken, Allendale, and Barnwell Counties in South Carolina.



Annual Budget
\$1.9 Billion

Headcount
11,200

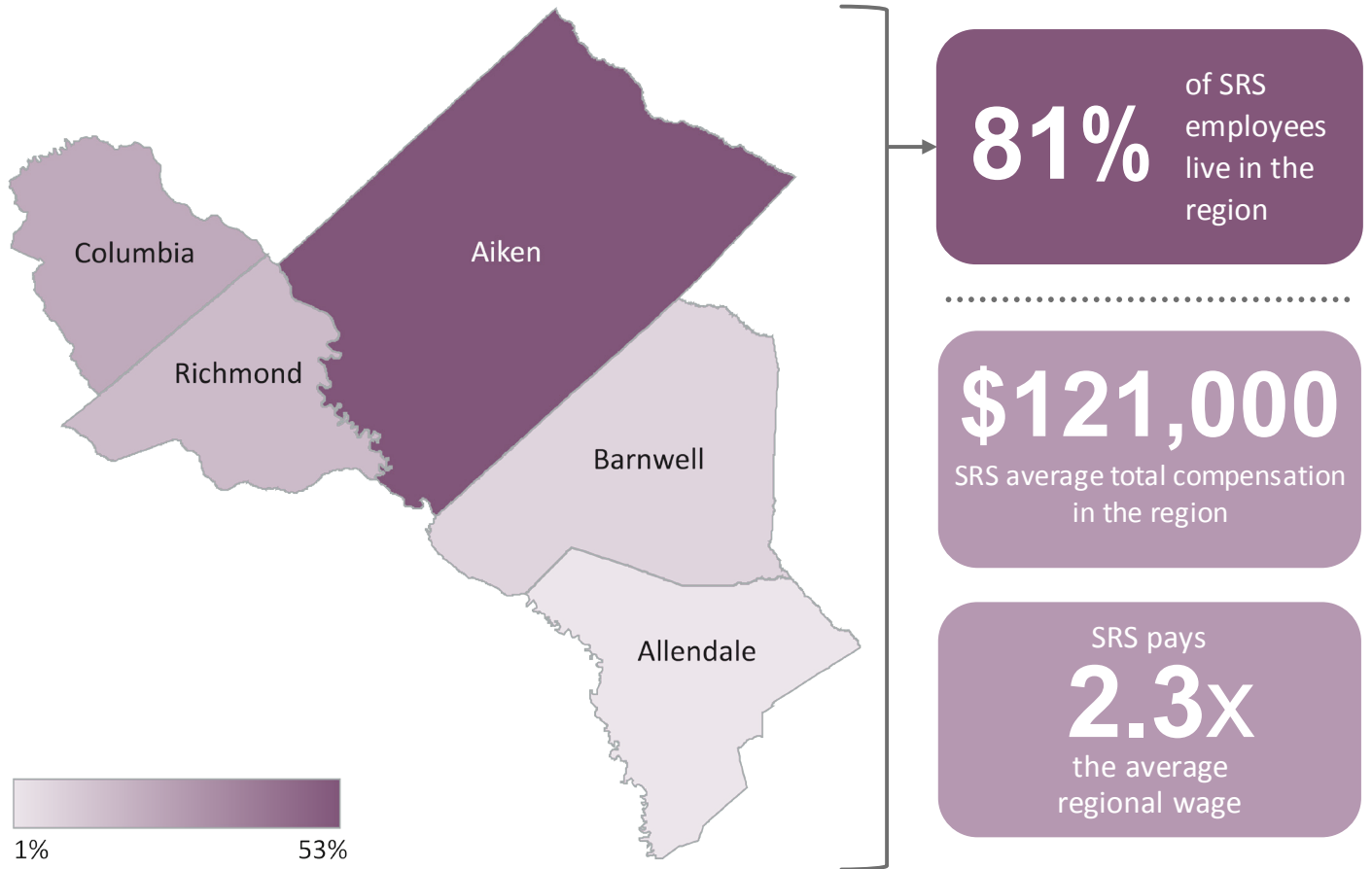
Total SC Land Mass
1%

3 federal agencies
7 contractors

WHAT SRS MEANS TO THE REGION

Although the Site is located in parts of Aiken, Allendale, and Barnwell Counties, the influence of the Site extends into Georgia to Richmond and Columbia Counties. Together, these five counties are the SRS Impact Areas.

The Savannah River Site employs 3.6 percent of all employed residents in the five-county Impact Area, and most of the Site's employees live in the region. Employees at the Site earn over twice as much as the regional average wage.

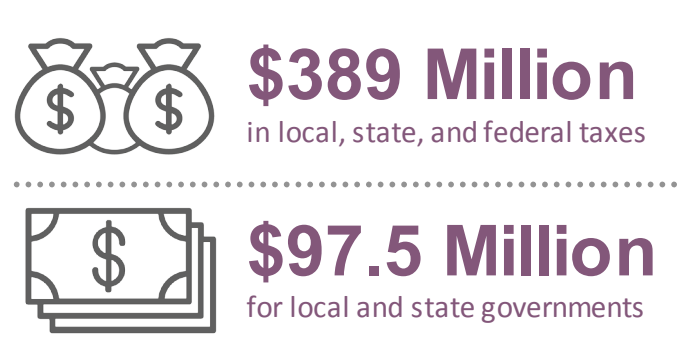
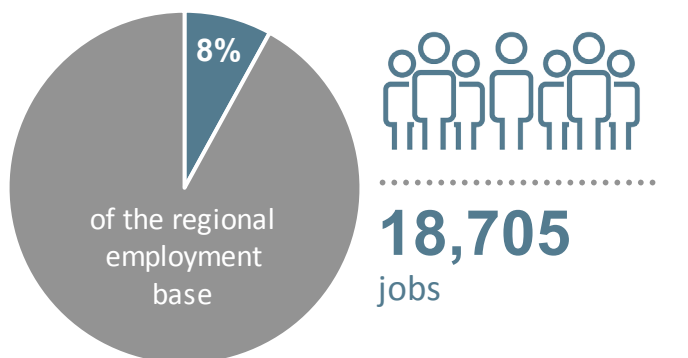
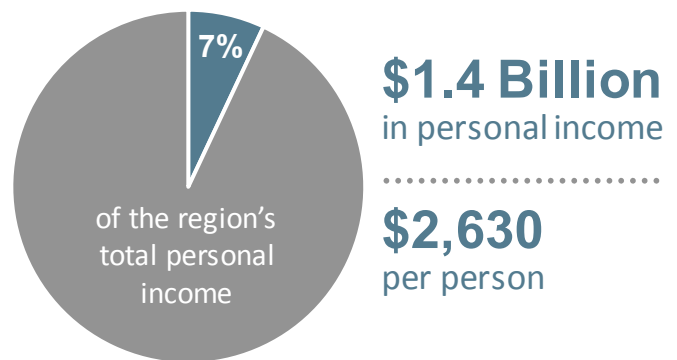
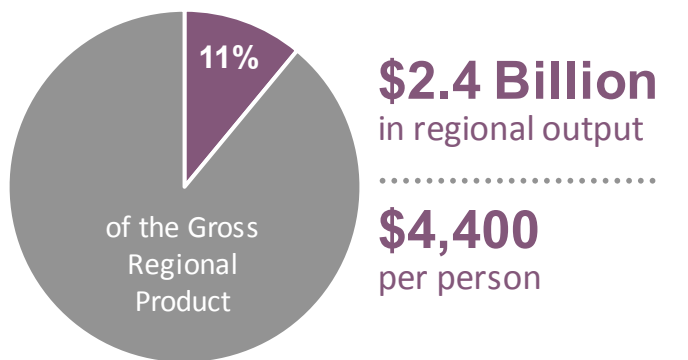
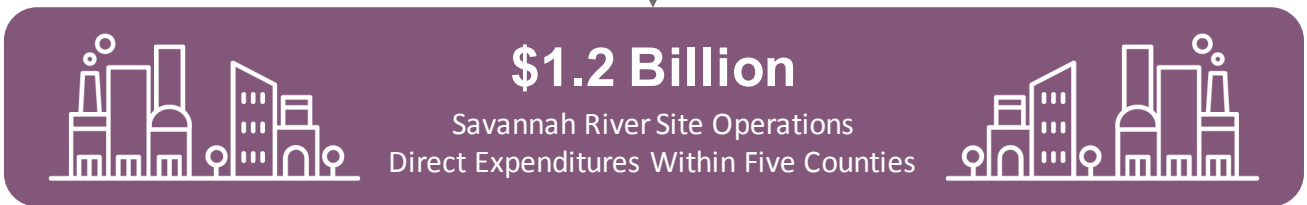
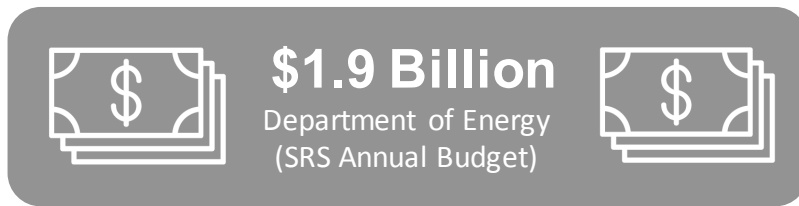


The federal government—Fort Gordon, SRS, and associated contractors—is responsible for more jobs in the region than any other industry sector.



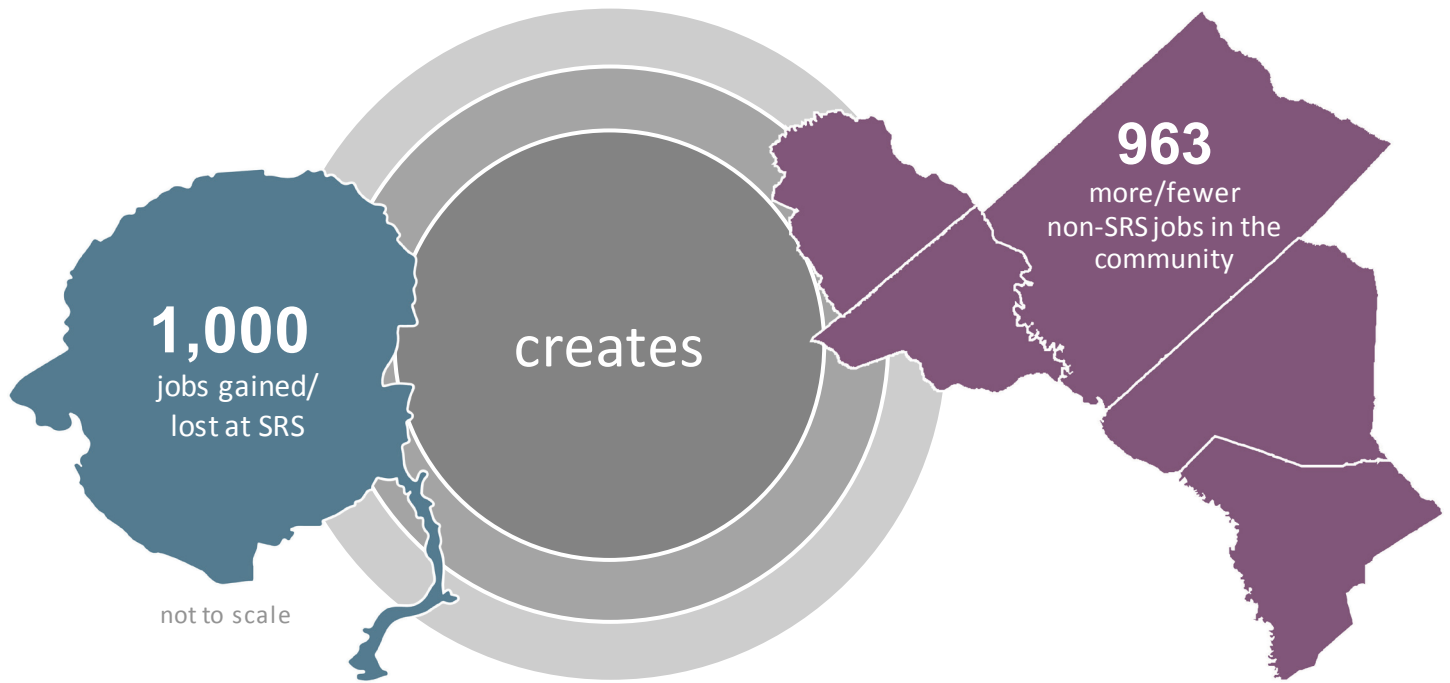
ECONOMIC IMPACT: DOLLARS & CENTS

The influence of Savannah River Site extends across the entire region as many of the dollars circulating in the regional economy originate from or are related to the Site. The estimated economic and fiscal impacts are summarized below.



COMMUNITY INFLUENCE OF SRS

The Savannah River Site and the region have a close relationship. For every job created or lost at the Site, the community gains or loses approximately one non-SRS job (e.g., restaurant workers, retail, realtors, etc.).



The Site's impacts go far beyond economic. SRS and its employees help to shape the community's education system, housing needs, amenities, and quality of place. With transitioning workforces at SRS and Fort Gordon, the region's communities must prepare.



COMMUNITY REUSE ORGANIZATION

two states, one future

The SRS Community Reuse Organization, a 501(c)(3) private nonprofit organization charged with developing and implementing a comprehensive strategy to diversify the economy of its five-county region, commissioned TIP Strategies to produce a comprehensive study of the current economic impact, the impact of a workforce transition, and a sensitivity analysis of a 1,000-job loss or gain at the Site.

For the full SRS Economic Impact Study, go to www.srscro.org/community-issues.